

APPROXIMATE LOCATION OF EXISTING COLONY OF JAPANESE BARBERRY. REMOVE + DISPOSE OF BARBERRY PLANTS + ROOTS. ADD 1 PICEA ABIES

APPROXIMATE LOCATION OF GRASSY PATCH. ALLOW GRASS TO REMAIN. ADD 2 PICEA ABIES (NORWAY SPRUCE)

KEY

- ⊗ PROPOSED PICEA ABIES (NORWAY SPRUCE) - (O ON THIS SHEET)
- ⊙ PROPOSED THUJA PLICATA 'GREEN GIANT' (ARBORVITAE 'GREEN GIANT') - (RT ON THIS SHEET)
- AR ACER RUBRUM (RED MAPLE)
- IO ILEX OPACA (AMERICAN HOLLY)
- JV JUNIPERUS VIRGINIANA (EASTERN RED-CEDAR)
- NS NYSSA SYLVATICA (TUPELO)
- CF CORNUS FLORIDA (FLOWERING DOGWOOD)
- PS PRUNUS SEROTINA (WILD BLACK CHERRY)
- PST PINUS STROBUS (WHITE PINE)
- QA QUERCUS ALBA (WHITE OAK)
- PA PICEA ABIES (NORWAY SPRUCE)
- LD LARIX DECIDUA (LARCH)
- QC QUERCUS COCCINEA (SCARLET OAK)
- QR QUERCUS RUBRA (RED OAK)
- QV QUERCUS VELUTINA (BLACK OAK)
- FG FAGUS GRANDIFOLIA (AMERICAN BEECH)

NOTES

THE APPROXIMATE EDGE-LINE OF THE EXISTING CANOPY COVER IS COMPOSED OF LARGEST TREES WITH 6" TRUNK DIAMETER CALIPER OR GREATER. THERE ARE SEVERAL YOUNG EVERGREEN TREES INDICATED ON THE PLAN, AND SOME MAY BE RELOCATED WITHIN THIS BUFFER ZONE.

SOUTH ROAD PERIMETER BUFFER - INCLUDING A PORTION OF SECTION ONE OF THE NORTHERN PERIMETER BUFFER.
PLAN

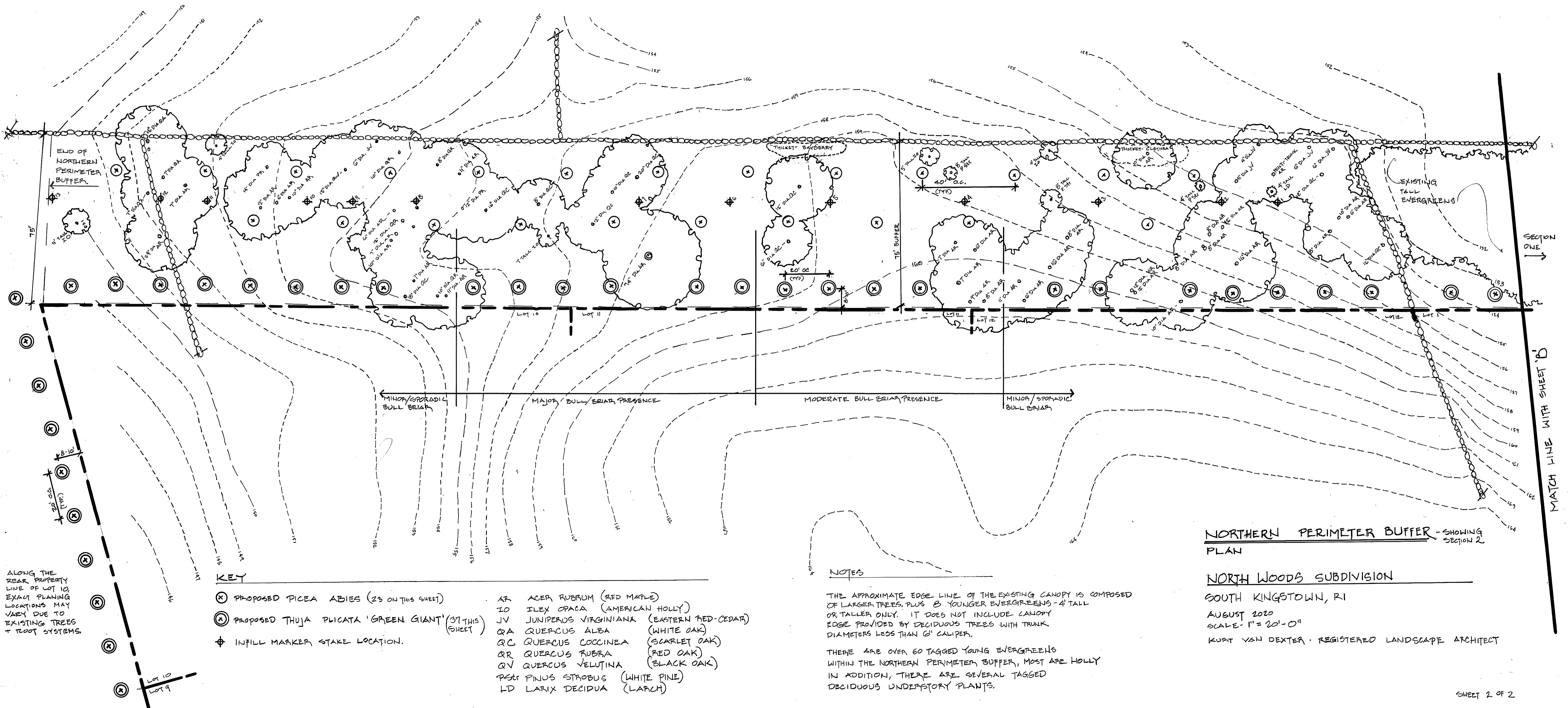
NORTH WOODS SUBDIVISION

SOUTH KINGSTOWN, RI

AUGUST 2020

SCALE - 1" = 20'-0"

KURT VAN DEXTER - REGISTERED LANDSCAPE ARCHITECT



ALONG THE REAR PROPERTY LINE OF LOT 10, EXACT PLANTING LOCATIONS MAY VARY DUE TO EXISTING TREES + ROOT SYSTEMS.

KEY

- ⊗ PROPOSED PICEA ABIES (23 ON THIS SHEET)
- ⊗ PROPOSED THUJA PLICATA 'GREEN GIANT' (37 THIS SHEET)
- ⊕ INFILL MARKER STAKE LOCATION.
- AR ACER RUBRUM (RED MAPLE)
- IO ILEX OPACA (AMERICAN HOLLY)
- JV JUNIPERUS VIRGINIANA (EASTERN RED CEDAR)
- QA QUERCUS ALBA (WHITE OAK)
- QC QUERCUS COCCINEA (SCARLET OAK)
- QR QUERCUS RUBRA (RED OAK)
- QV QUERCUS VELUTINA (BLACK OAK)
- PST PINUS STROBUS (WHITE PINE)
- LD LARIX DECIDUA (LARCH)

NOTES

THE APPROXIMATE EDGE LINE OF THE EXISTING CANOPY IS COMPOSED OF LARGER TREES, PLUS Ⓞ YOUNGER EVERGREENS - 4' TALL OR TALLER ONLY. IT DOES NOT INCLUDE CANOPY EDGE PROVIDED BY DECIDUOUS TREES WITH TRUNK DIAMETERS LESS THAN 6" CALIPER.

THERE ARE OVER 60 TAGGED YOUNG EVERGREENS WITHIN THE NORTHERN PERIMETER BUFFER, MOST ARE HOLLY. IN ADDITION, THERE ARE SEVERAL TAGGED DECIDUOUS UNDERSTORY PLANTS.

NORTHERN PERIMETER BUFFER - SHOWING SECTION 2 PLAN

NORTH WOODS SUBDIVISION
SOUTH KINGSTOWN, RI
 AUGUST 2020
 SCALE - 1" = 20'-0"
 KURT VAN DEXTER - REGISTERED LANDSCAPE ARCHITECT